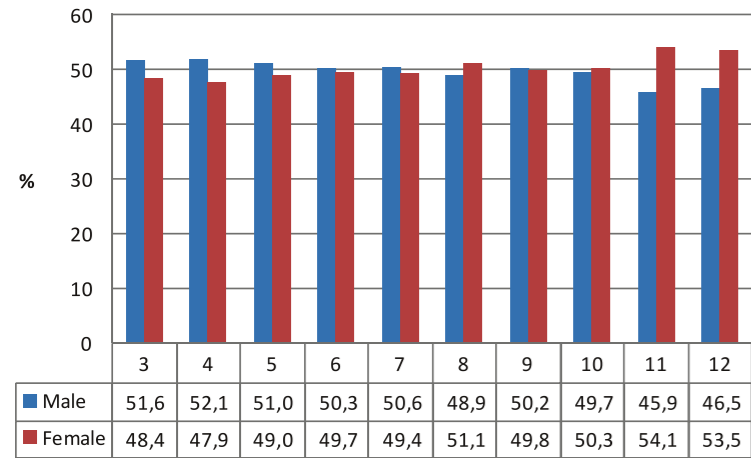


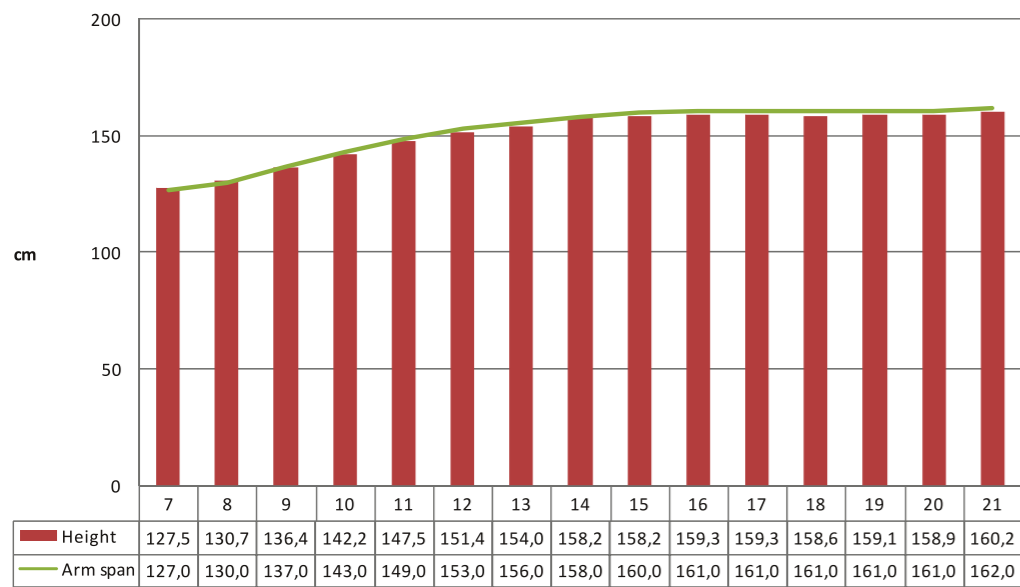
**Figure 1: Gender by grade**



Refer to Figure 1 to answer the following questions:

1. Complete the following:
  - 1.1 The percentage of girls steadily increased from \_\_\_\_ % in grade 3 to \_\_\_\_ % in grade 12.
  - 1.2 The percentage of boys steadily decreased from \_\_\_\_ % in grade 3 to \_\_\_\_ % in grade 12.

**Figure 2: Comparison of arm span and height by age for females**



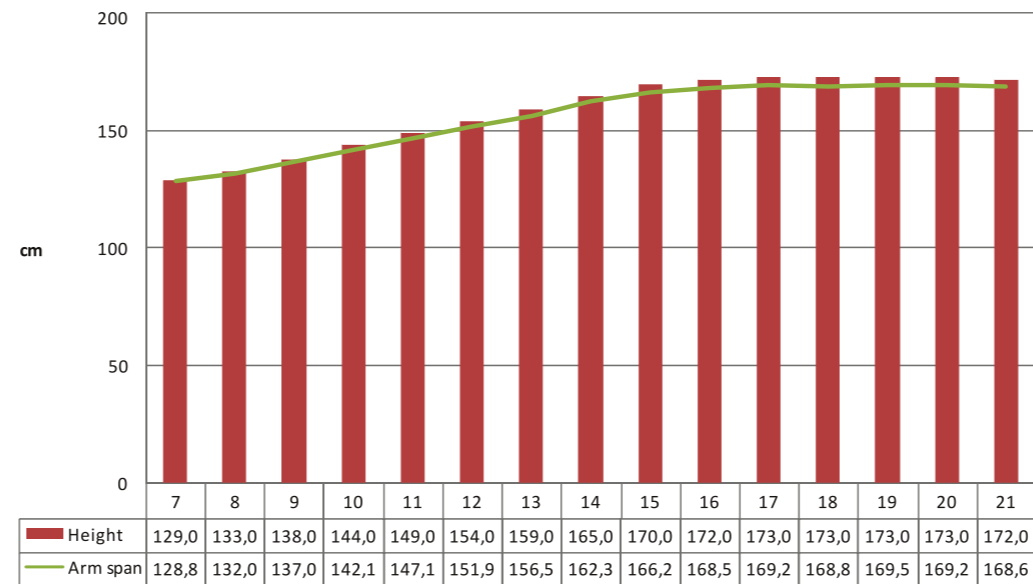
Refer to Figure 2: 'Comparison of arm span and height by age for females' to respond to the following questions:

2. Compare the height and arm span of girls from 15 years and older. Which is greater?

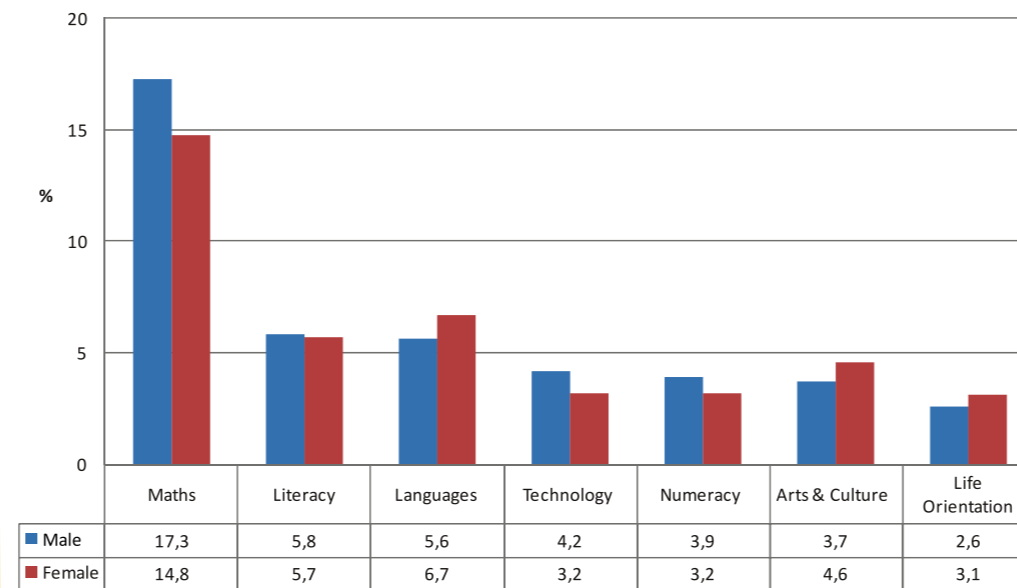
Refer to Figure 2: 'Comparison of arm span and height by age for females' and Figure 3: 'Comparison of arm span and height by age for males'.

3. How does the relationship between the height and arm span of girls compare with that of boys for learners aged 15 years and older? Why do you think this is the case?

**Figure 3: Comparison of arm span and height by age for males**



**Figure 4: Favourite subject by gender, Grades 3 to 7**



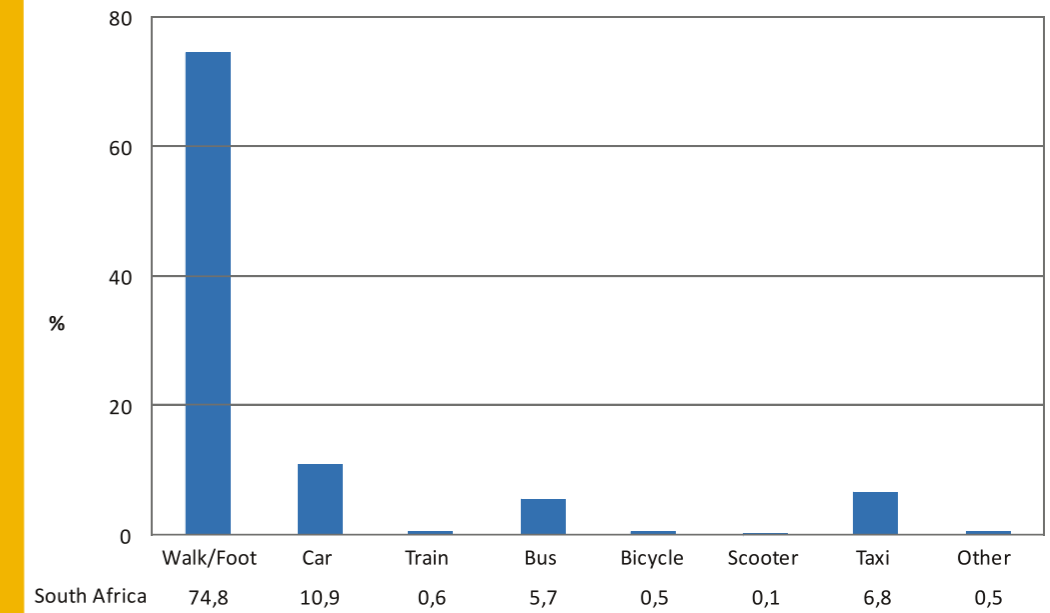
Refer to Figure 4: 'Favourite subject by gender, Grades 3 to 7' to respond to the following questions:

4. Complete the table below:

Subject	Percentage of boys favouring this subject	Percentage of girls favouring this subject
Maths		
Technology		
Languages		

5. Which is the most favourite subject for boys and girls?

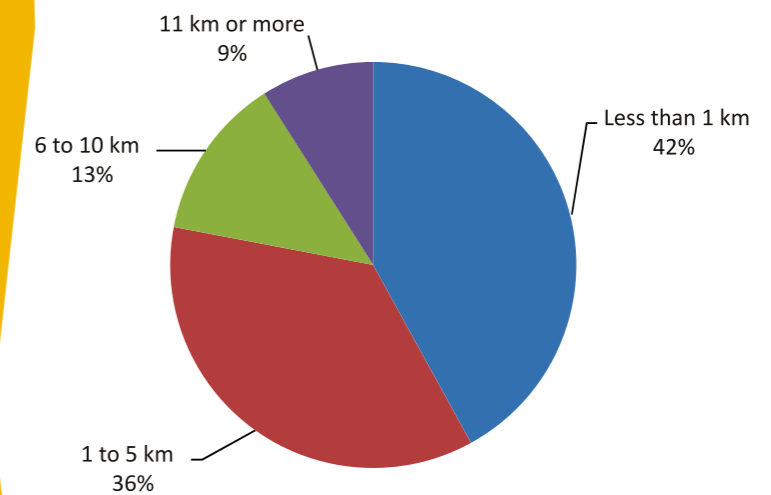
**Figure 5: Mode of transport to school from home**



Refer to Figure 5: 'Mode of transport to school from home' to respond to the following question:

6. Name the next three modes of transport used most often to get to school besides walking.

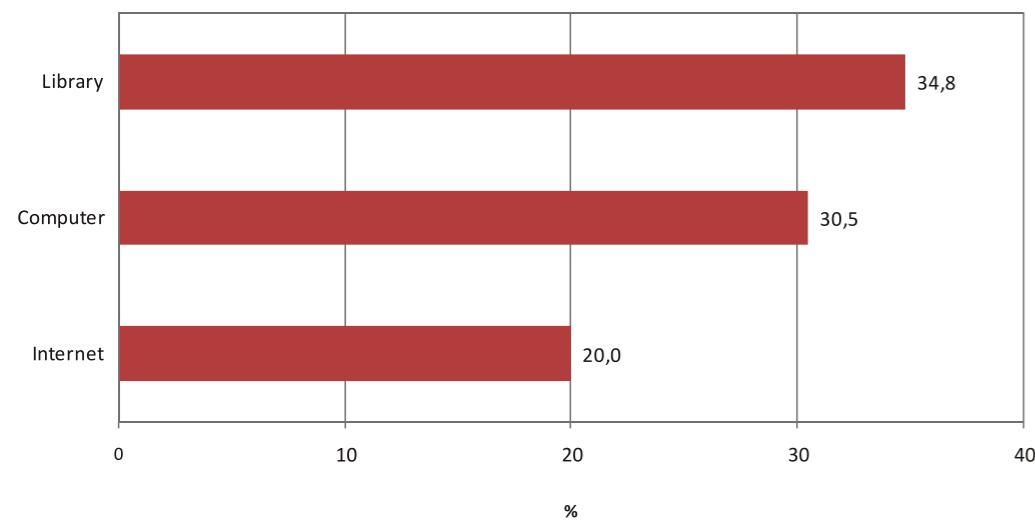
**Figure 6: Travel distance to school from home**



Refer to Figure 6: 'Travel distance to school from home' to respond to the following questions:

7. What percentage of learners live less than 1 km from their school?
8. What percentage of learners live less than 6 km away from their school?

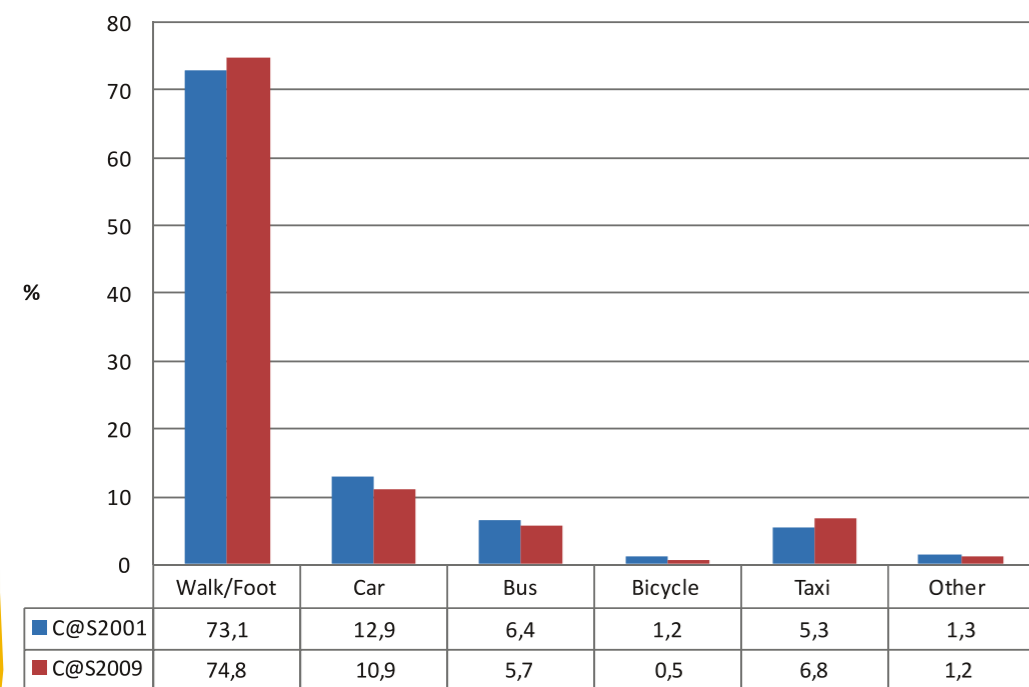
**Figure 7: Access to goods and services in the community**



Refer to Figure 7: 'Access to goods and services in the community' to respond to the following question:

9. What percentage of learners have access to a library?

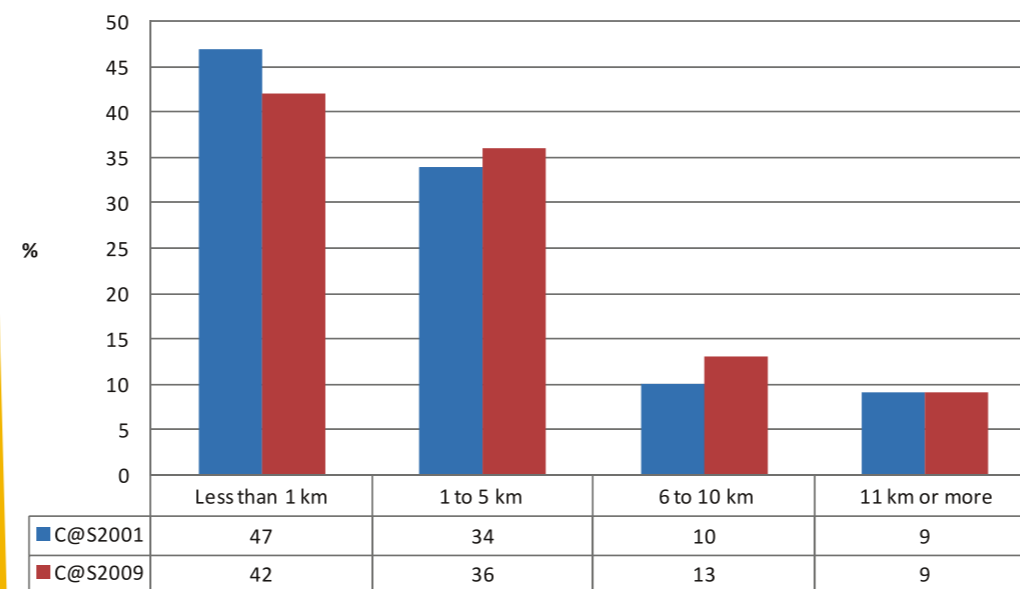
**Figure 8: Mode of transport to school from home**



Refer to Figure 8: 'Mode of transport to school from home' where a comparison between 2001 and 2009 is done, to respond to the following question:

10. Which mode/s of travel to school has had an increased percentage of learners between Census At School 2001 and Census At School 2009, and what is the percentage increase respectively for each mode of travel?

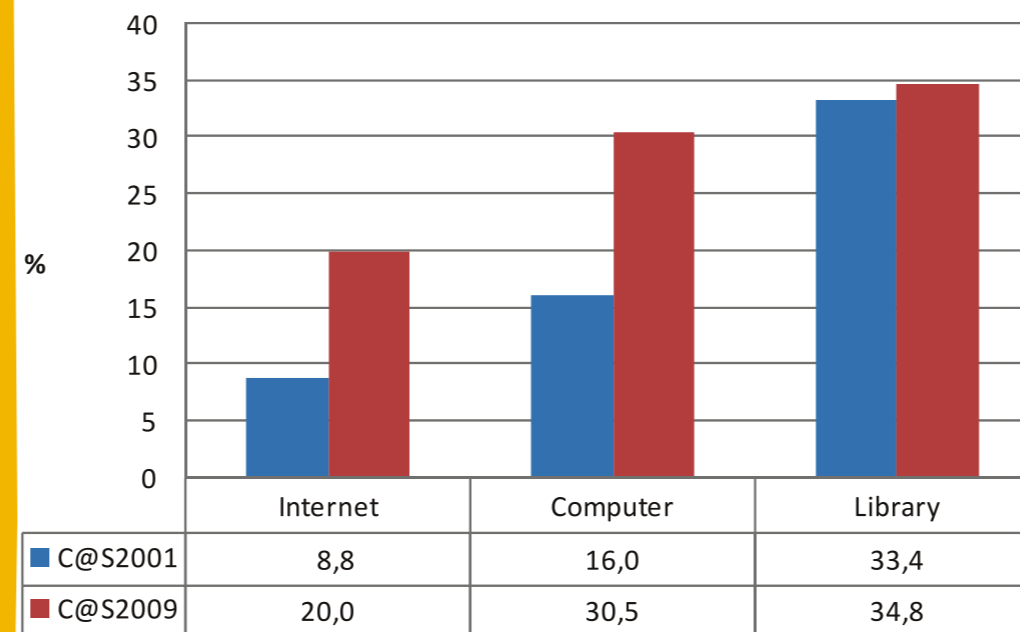
**Figure 9: Travel distance to school from home**



Refer to Figure 9: 'Travel distance from home to school' where a comparison between 2001 and 2009 is done, to respond to the following question:

11. Which travel distance/range has had a percentage decrease of learners between Census At School 2001 and Census At School 2009, and what is the percentage decrease respectively for each range?

**Figure 10: Access to goods and services in the community**



Refer to Figure 10: 'Access to goods and services in the community' where a comparison between 2001 and 2009 is done, to respond to the following question:

12. What type of service has shown the greatest percentage increase in accessibility between Census At School 2001 and Census At School 2009?



# Quiz

